

SPECIFICATIONS:

Pilot Operated poppet valve with Manual Override.
Two way, normally closed, actuate to open..
Maximum pressure 5,000 PSI, Ports 1 and 2.

See "SHIFT FORCE NOTES" regarding operating force required to open valve.
Full Flow is achieved at .08" Stroke.
Full Travel is at Prox. .16" Stroke.
Do not travel to or past full stroke with positive force.

Use 1" wrench to install valve.
Torque to 20 to 30 foot pounds.

Use lubricant on external oil seals and mounting threads.

Fluid temperature -45°F (-42.7°C) to 200°F (93.3°C)

STANDARD OPTIONS

T Option 10-32 vent ports at Key 7 (2 Places)

Seat (Key 4) is heat treated Stainless Steel.

Seal Materials used are Buna-N and Teflon.

Optional seal and construction materials available.

SHIFT FORCE NOTES:

10 to 15 Pounds of Force is required to shift the valve poppet with zero pressure on ports 1 and 2.

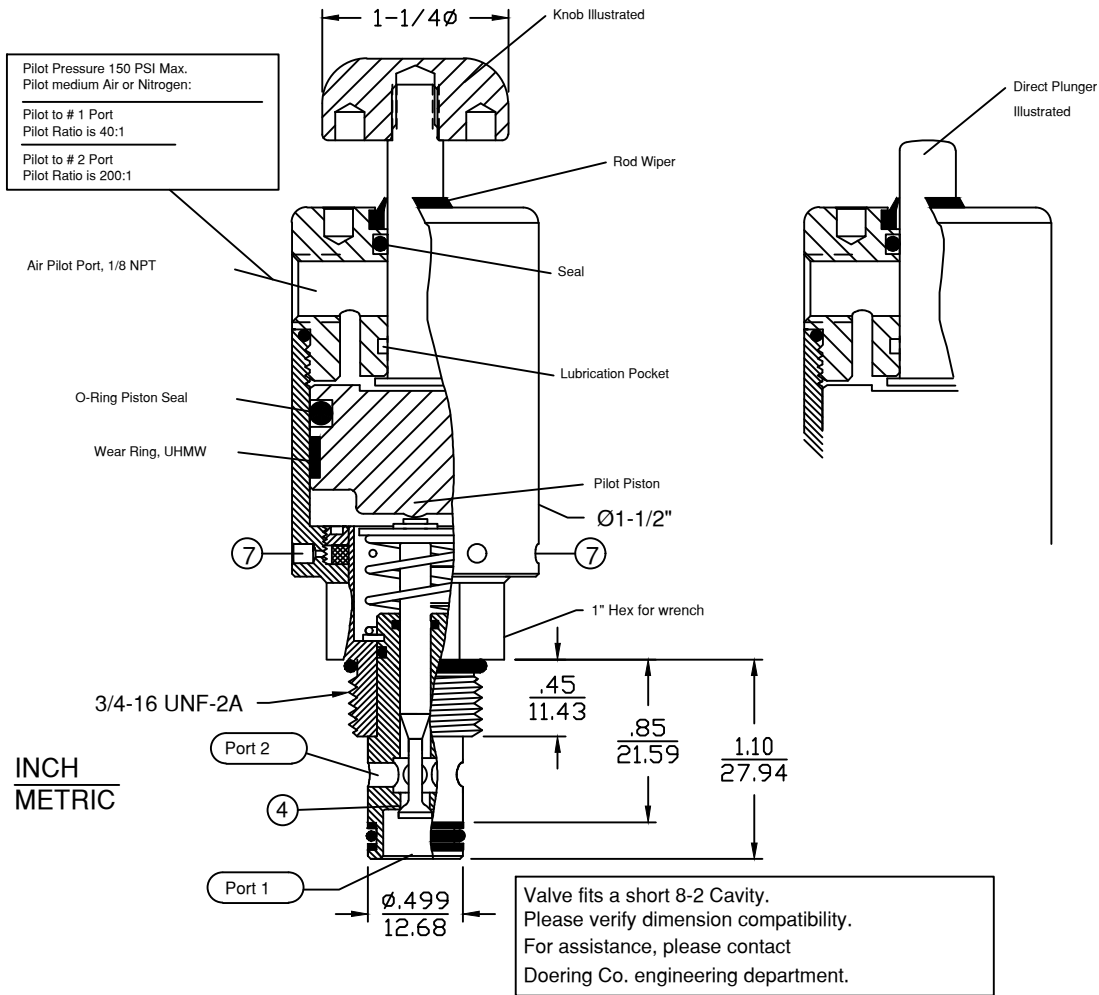
Any pressure on port 1 will increase Force requirement by .030 X PSI at No. 1 Port.

Any pressure on port 2 will increase Force requirement by .003 X PSI at No. 2 Port.

For total force requirement, add all 3 results.

Using port 2 as pressure inlet may reduce the force requirement to shift valve.

CARTRIDGE VALVE

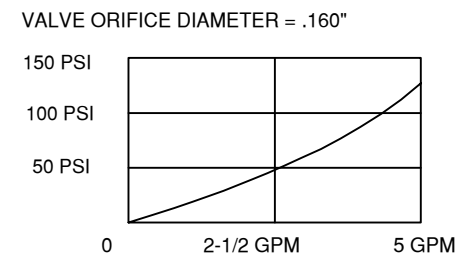


Valve Number: **82D#227040M0#1**

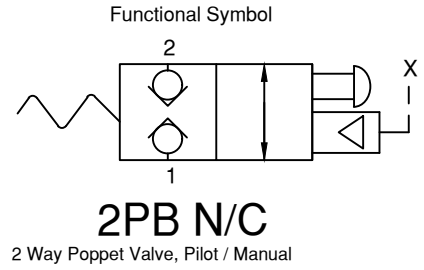
D = Direct Plunger
K = Aluminum Knob
R = Red Anodized Knob
S = Stainless Knob

Key No. 4
Blank = Hard Seat
K = Soft Seat

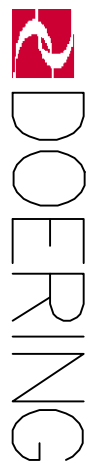
PRESSURE DROP CHART $C_V = 0.4$



2PB SERIES



6343 RIVER ROAD SE ■ CLEAR LAKE, MN 55319 USA
Telephone: 320-743-2276 ■ Fax: 320-743-3723
mailto:mailbox@doering.com ■ www.doering.com



SPEC. SHEET NO. 1203071 REV. 002