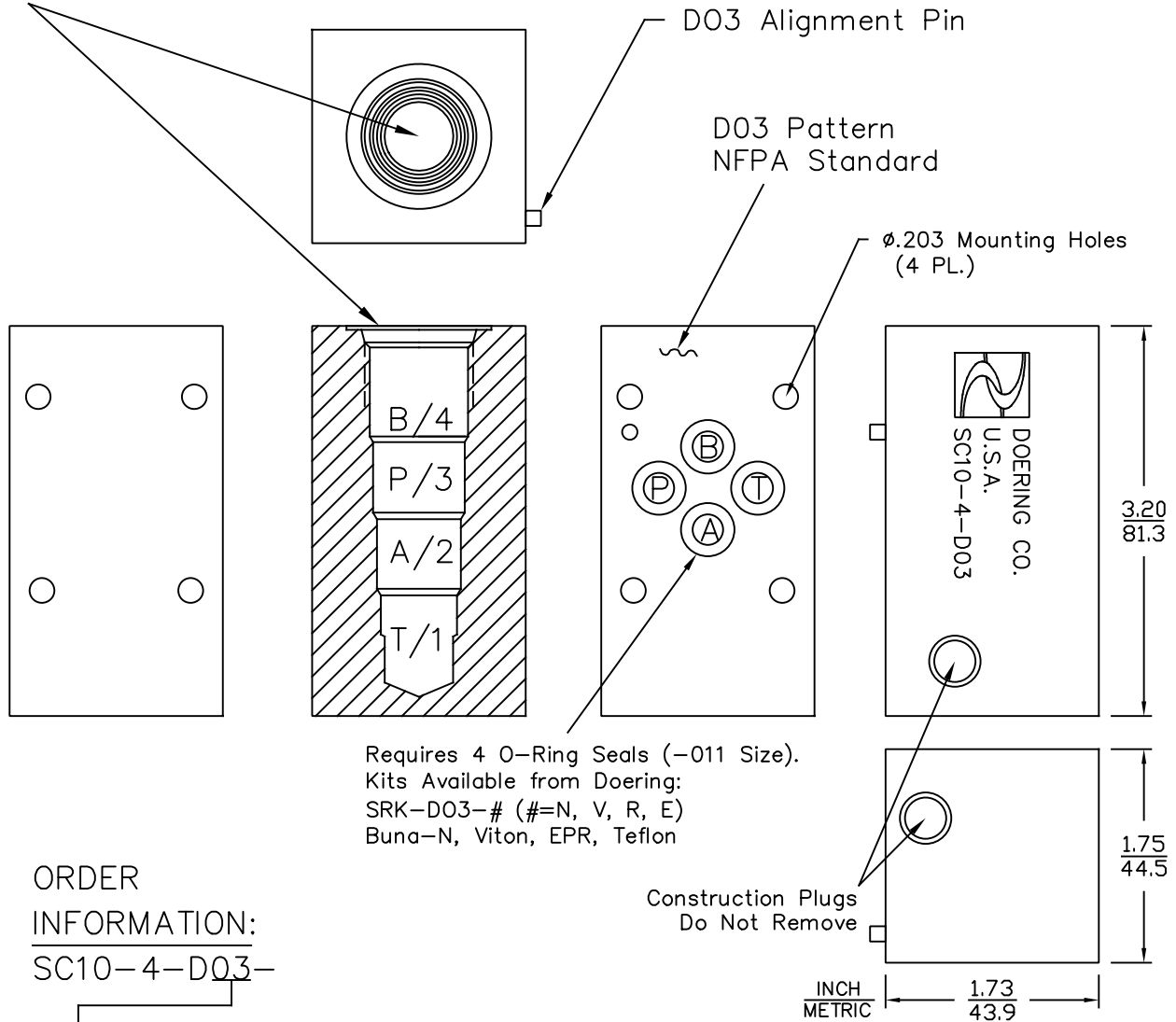


# DO3 to 10-4 Adapter

Cartridge Valve Cavity:  
Doering C-8544 (10-4)  
Cavity Drawing: 1200671



Requires 4 O-Ring Seals (-011 Size).  
Kits Available from Doering:  
SRK-DO3-# (#=N, V, R, E)  
Buna-N, Viton, EPR, Teflon

**ORDER INFORMATION:**

SC10-4-DO3-

ENTER: For Material Option, Pressure Rating

Blank	(6061 Aluminum Body, Brass Construction Plugs)	3,000 PSIG
S	(304 Stainless Body, SST. Construction Plugs)	5,000 PSIG
S316	(316 Stainless Body, SST. Construction Plugs)	5,000 PSIG