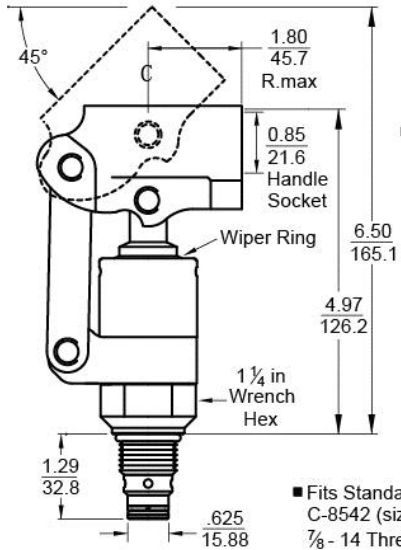


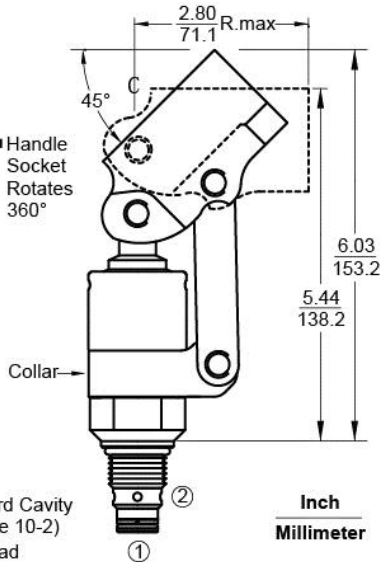
# Hydraulic Cartridge Style Hand Pumps

## 2.1 K | 242-S Series

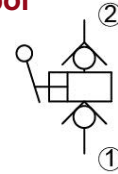
### Push Style



### Pull Style



### Functional Symbol



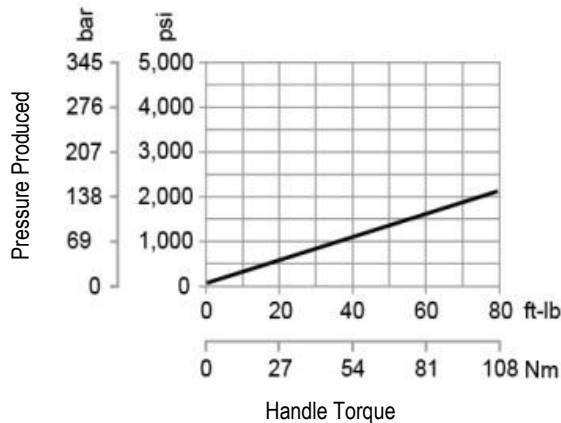
### Technical

Operating Pressure	5,000 psi [345 bar]
Proof Pressure	7,500 psi [518 bar]
Produced Pressure (80 ft.-lb. handle torque)	2,100 psi [145 bar]
Displacement (Flow per stroke cycle)	0.442 cu. in. [7.2 cc]
Temperature	-40° to 248°F [-40 to 120°C]
Weight	1.8 lbs. [0.82 kg]
Installation Position	No Restrictions
Cavity	C-8542 [size 10-2]
Cavity Form Tooling	FT-8542

### Performance and Operation

Maximum Operating Pressure 5,000 psi [345 bar]  
 Maximum Handle Torque 80 ft. lbs. [108.5 N-m]

#### Pressure Produced | Handle Torque



### Guided Check System

Our guided check system is a special style check for applications demanding exceptional low leak hold. Bubble tested for 0 leaks. Flow direction from ports 2 to 1.

### Installation Note

Lubricate seals and install into cavity with a 1-1/4 in. wrench. Torque to approximately 50 ft. lbs. [68 N-m].

### Order Info

■ Part No. 24275

#### Linkage Style

- 1 = Push to Pressurize
- 2 = Pull to Pressurize

#### Handle Joining Option i

- (Blank) = No Joining Option
- L = Lanyard and Pin
- P = Pin with E-clips

#### Seals

- (Blank) = Buna N O-rings
- E = Teflon® O-rings
- R = EPR/EPDM O-rings
- V = Viton® O-rings

Note: All pump back-up rings are Teflon.  
Wiper ring is polyurethane.

#### Materials

- S = Stainless Steel with Electroless Nickel  
Plated Carbon Steel – Socket and Collar
- SS = All Components Are Stainless Steel